

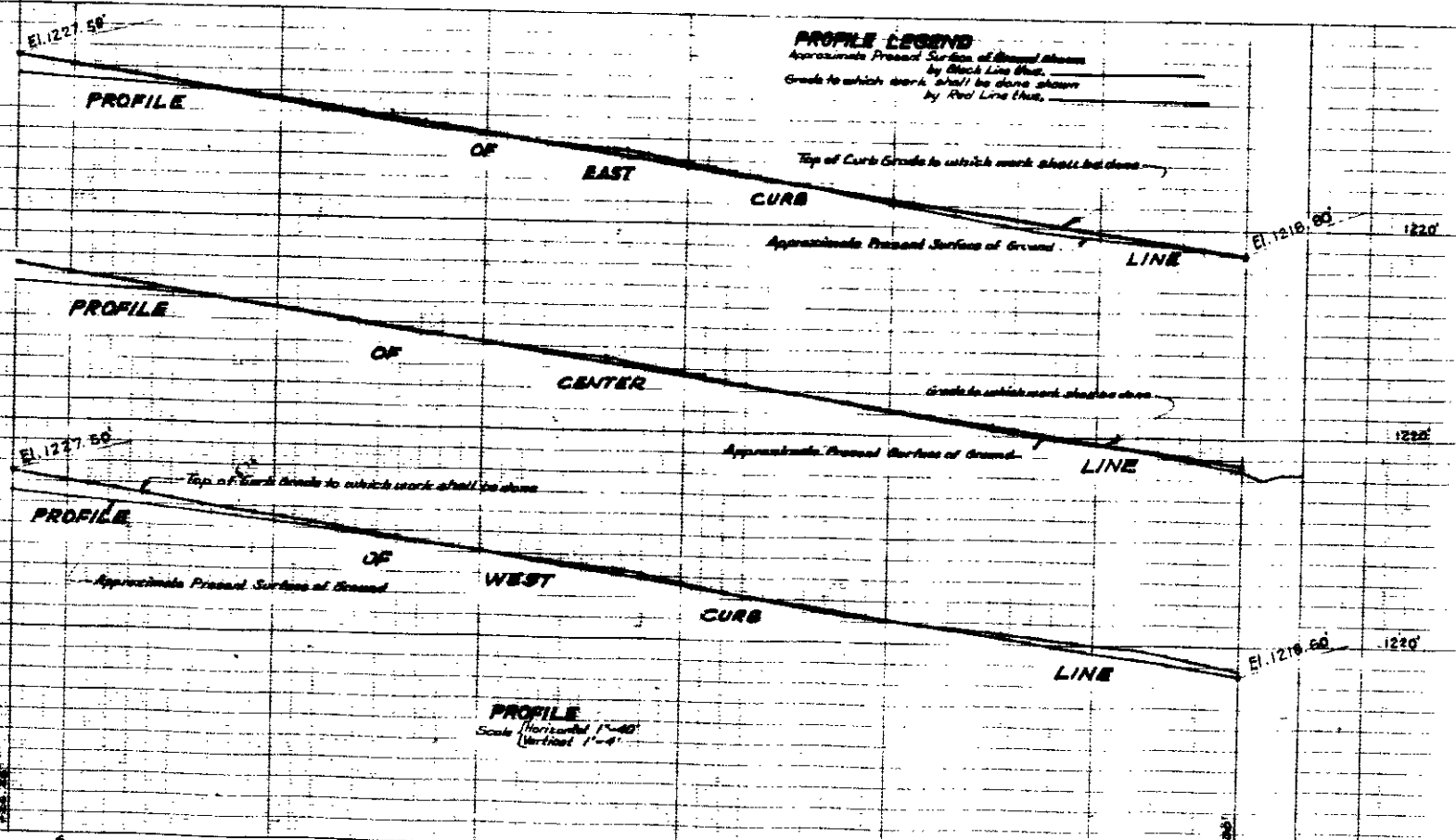
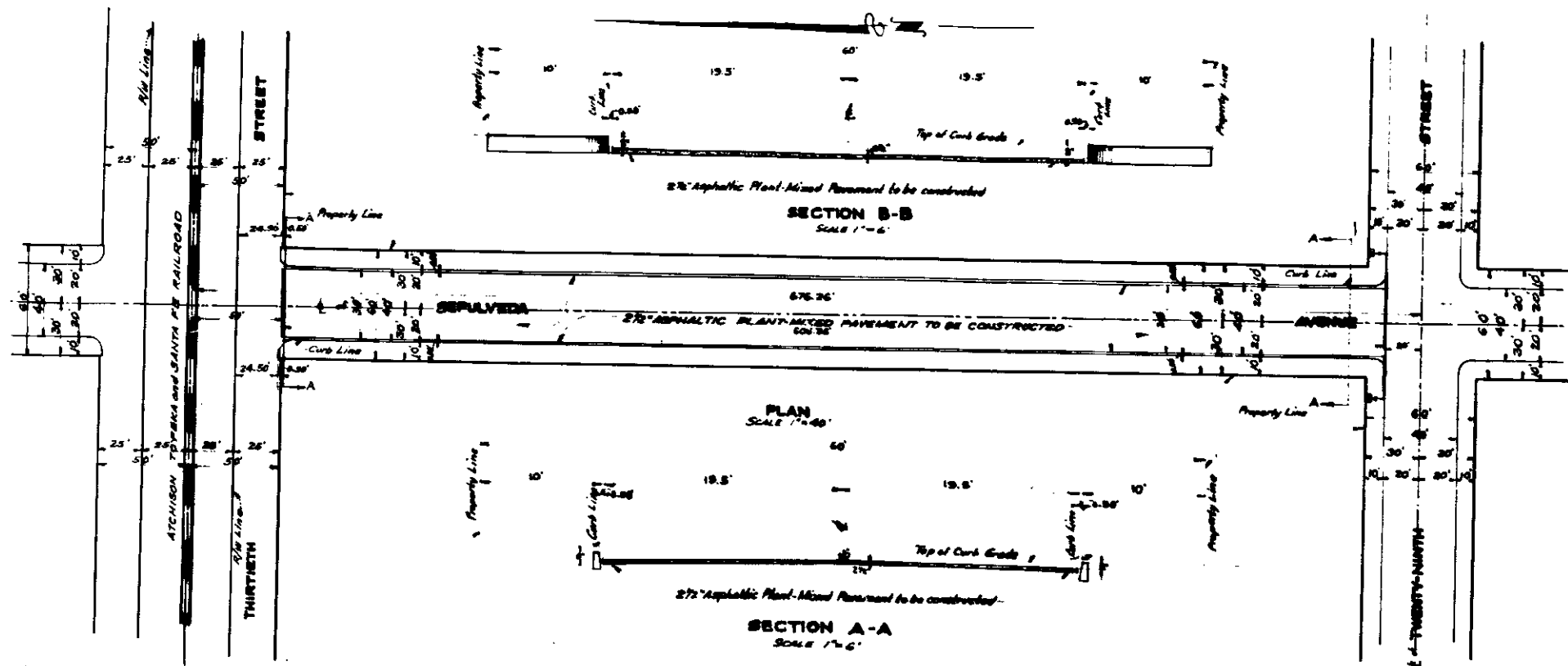
PLAN NO 1623  
 FOR THE IMPROVEMENT OF  
**SEPULVEDA AVENUE**  
 BETWEEN  
 TWENTY-NINTH STREET AND THIRTIETH STREET  
 IN THE CITY OF  
 SAN BERNARDINO  
 CALIFORNIA

MARCH 1948

R.D. FORSYTHE,  
 Acting City Engineer

PLAN ADOPTED April 4, 1948

FILED  
 APR 2 1948  
 SAN BERNARDINO  
 COUNTY



**LEGEND**  
 To A, means East or West  
 To B, means East or West  
 To C, means Center  
 To D, means Center Line  
 To E, means Center Line  
 To F, means Center Line  
 To G, means Center Line  
 To H, means Center Line  
 To I, means Center Line  
 To J, means Center Line  
 To K, means Center Line  
 To L, means Center Line  
 To M, means Center Line  
 To N, means Center Line  
 To O, means Center Line  
 To P, means Center Line  
 To Q, means Center Line  
 To R, means Center Line  
 To S, means Center Line  
 To T, means Center Line  
 To U, means Center Line  
 To V, means Center Line  
 To W, means Center Line  
 To X, means Center Line  
 To Y, means Center Line  
 To Z, means Center Line

**TITLE TO STRIPS**  
 SEPULVEDA AVENUE was established by map 54  
 by map of Independence Square recorded in book  
 27 of maps, of pages 6 and 7, and by map of Gordon  
 Estate in Unit 2 Tract 1803; recorded in book 26 of maps,  
 of page 22, records of San Bernardino County,  
 California.  
 Name changed from LYMAN STREET to SEPULVEDA  
 AVENUE by resolution No 163 of the City of San  
 Bernardino, California.  
 Adopted November 3, 1938.

**GRADE ORDINANCE**  
 Grade of Sepulveda Avenue was established by  
 Resolution No 1250 of the City of San Bernardino,  
 California.  
 Adopted November 18, 1946.

**NOTES**  
 All elevations shown in this plan are in feet and are  
 above a datum which is 1045.28 feet below the  
 City Bench Mark as established by Ordinance  
 365 of the City of San Bernardino, California.